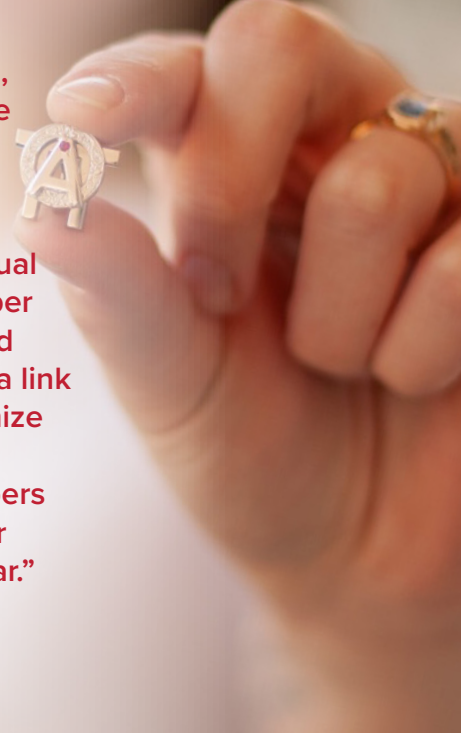


GUIDE TO BADGE WEAR

The Guide to Badge Wear is approved by the Executive Board and the Rituals, Traditions and Jewelry Committee. If you have any questions regarding badge wear be sure to contact your RT&J Liaison.

In Alpha Omicron Pi, our badge is our mutual piece of jewelry. It may be worn only by initiated members. Our badge represents our motto, very special mutual promises, and our link to everyone who ever has been or ever will be a member of Alpha Omicron Pi. Wearing the AOII badge is one of the most important and symbolic privileges that is granted with Fraternity membership. Our badge is a link to our shared values and thus each member of Alpha Omicron Pi shall recognize its importance and display the badge with due dignity, respect, and care. All collegiate chapter members, alumnae chapter members and individual members attending collegiate and alumnae Rituals, Ceremonies and Services may wear clothing that is appropriate and respectful for wearing the badge, "badge wear."



HOW TO WEAR THE BADGE

- Place the badge over the heart on the left side of the chest. Regardless of the appropriate attire on which the badge is worn, it always is pinned over the heart on the left side of the chest.
- The badge may be worn on a bracelet, as a pendant on a chain, or as a ring.
- The badge may be worn on the lapel of a blazer, but not on the collar of a blouse, shirt, sweater, or jacket.
- The badge is worn only when a member of Alpha Omicron Pi is a credit to the Fraternity in appearance, behavior, and activity.
- In the case of a member owning more than one badge, only one badge may be worn on her attire at a time. Additional badges may be worn on a bracelet, as a pendant on a chain, or as a ring.
- Each initiated member should wear her badge during Rituals, Ceremonies and Services.
- No jewelry may be worn during Rituals, Ceremonies or Services that is distracting.
- Footwear shall consist of shoes that do not create noisy distractions. Bare feet, socks without shoes, athletic shoes, and flip flops are not permitted.

THE BADGE MAY BE WORN

- On formal clothing when the occasion is appropriate.
- On all clothing of the style appropriate for a professional job interview.
- On tops (which include blouses, knit shirts, sweaters, and blazers) that are of a style appropriate for a professional job interview. When multiple layers of clothing are worn, the badge may be worn on the top most garment (such as a blazer).
- On dresses, rompers or jumpsuits of a style appropriate for a professional job interview.
- With skirts, slacks, pants, or jeans.

THE BADGE MAY NOT BE WORN

- On clothing that is not in a style appropriate for a professional job interview.
- On tank tops or t-shirts.
- On athletic apparel.
- On jerseys or sweatshirts.
- With shorts

